

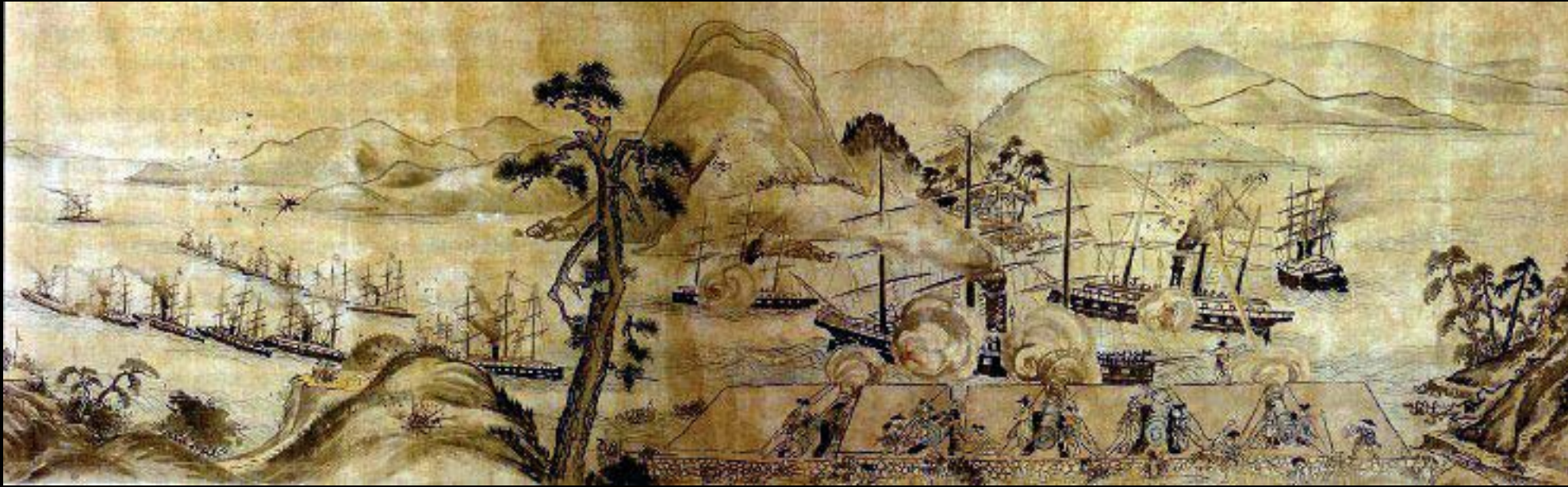
# Building a *Civilized* Nation

# From Coup to Revolution

- Change in governance
- Dismantling the status system
- Reorienting Towards the World



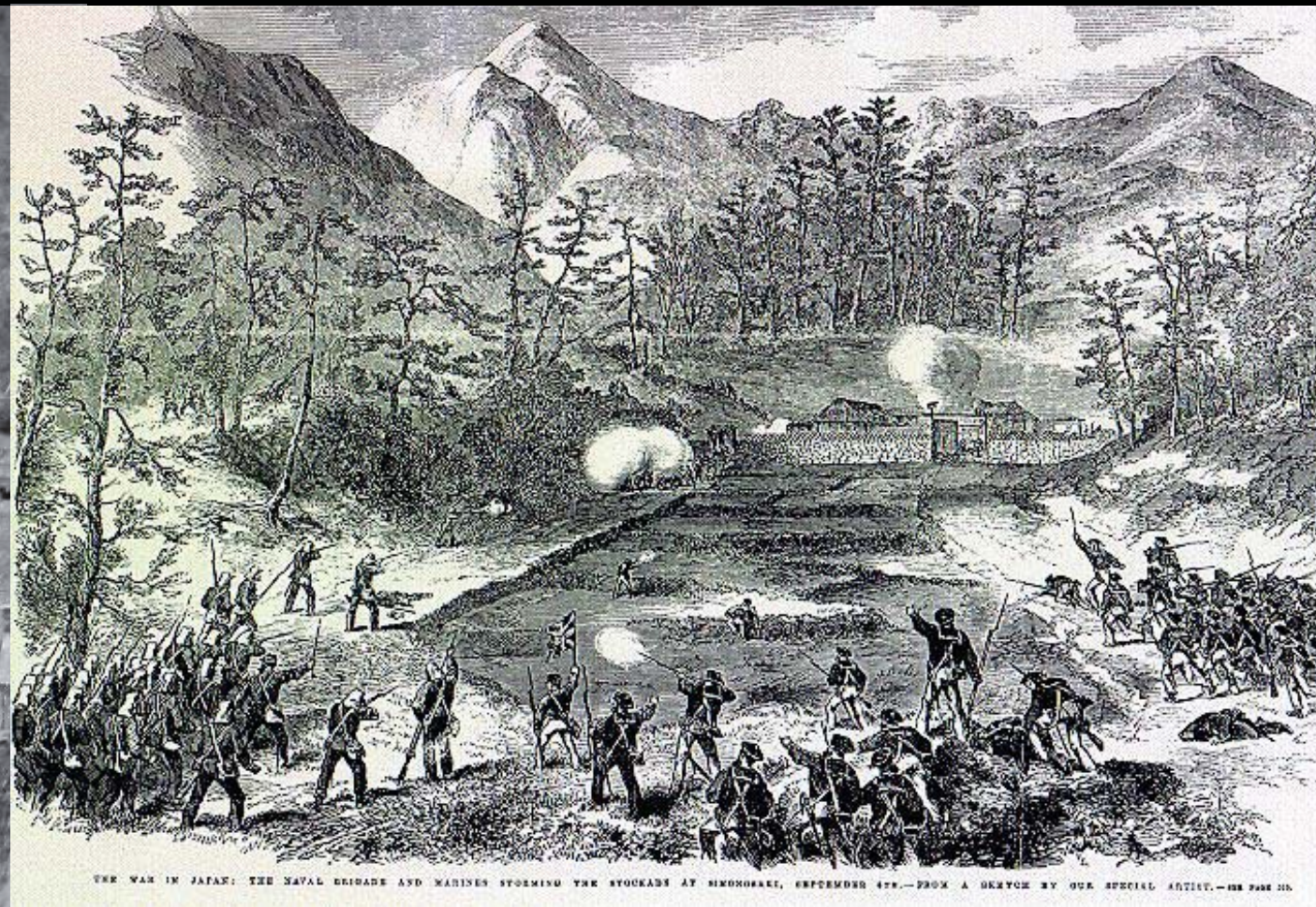
# Battles of Shimonoseki (1863 and 1864)



This image is in the public domain.  
Source: [Wikimedia Commons](#).



This image is in the public domain.  
Source: [Wikimedia Commons](#).



This image is in the public domain.  
Source: [Wikimedia Commons](#).



# Lessons Learned

- Satsuma and the Richardson Affair (Sept 14, 1862): an unfortunate encounter on Tōkaidō between Shimazu Hisamitsu and 4 British tourists
- August 1863: bombardment of Kagoshima



7KLV IP DJ H LV LQ V&H SXEØF GRP DLO  
6RXUFH : INP HGID &RP P RQV



# Reorienting Towards the World



7KIV IP DJ H LV IQ V&H SXE QF GRP DLO  
6RXUFH : INIP HGID &RP P ROV



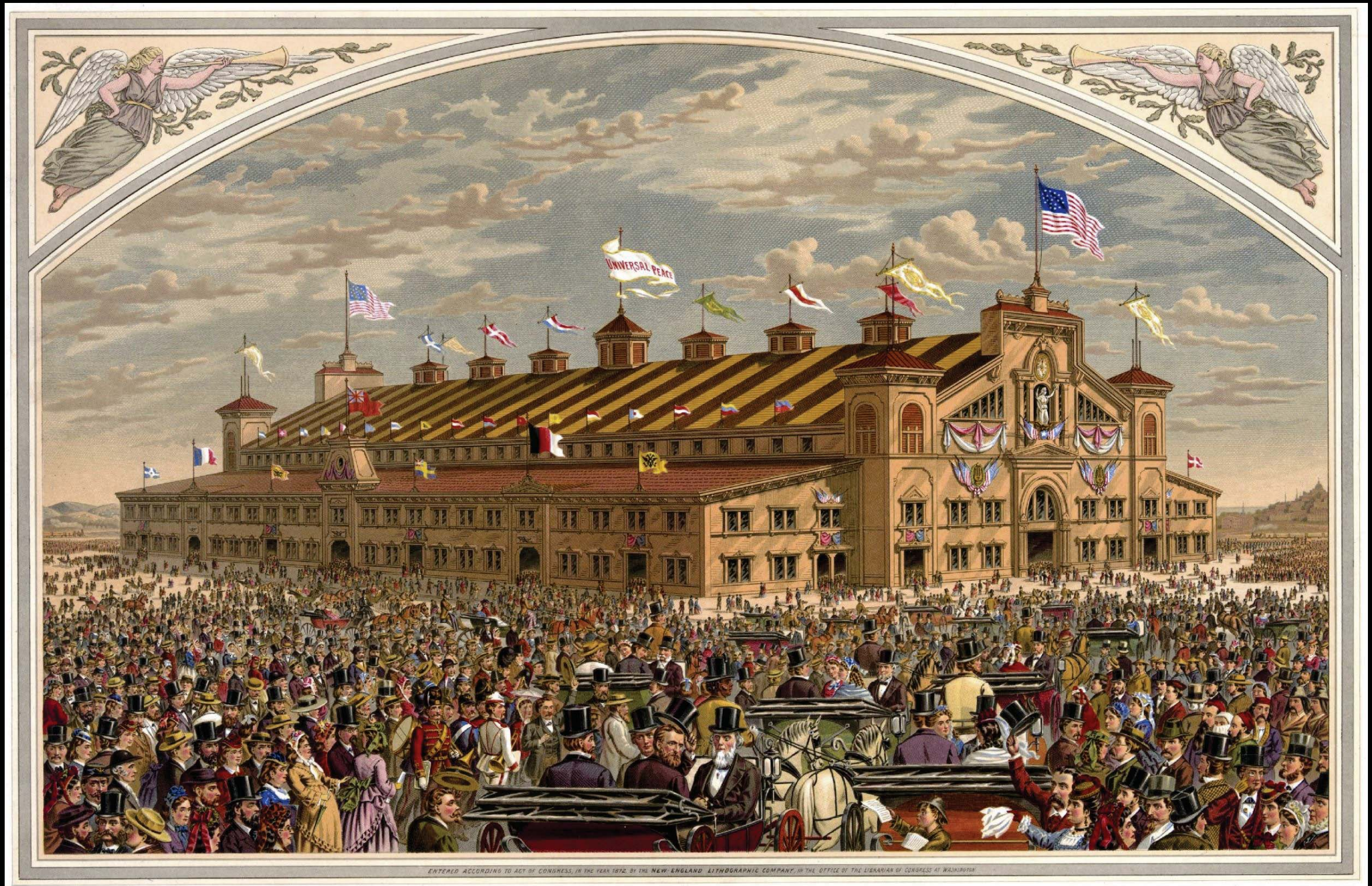
# Iwakura Embassy in Boston

“From our arrival in San Francisco until our departure from Boston, we traversed the breadth of America. If I summarize very simply what we actually witnessed, this whole land, taking after European culture, is filled with the spirit of independence and enthusiasm for promoting industry and accumulating property, and these have amply developed in this country.”

-Kume Kunitake



# “World’s Peace Jubilee and International Music Festival” (1872)



7KLV IP DJ H LV LO VKH SXEØF GRP DLO  
6RXUFH : LNIP HGID &RP P ROV



# Kume Kunitake

“A piece was played which was about an American, captured in the War of Independence, whose patriotism hardened and who never yielded. The American audience, upon hearing this, could not stop applauding. They clapped and stamped their feet, demanding encore after encore, and it was some time before the hall settled down.”



# Kume Kunitake

“Although the countries of the world differ in size, each is dedicated to its way of life, and if a nation achieves independence, **a spirit of patriotism** inevitably wells up [in their hearts]. It is rather like loving oneself and one's home [above other places]...Therefore, the patriotic mind naturally gives rise to humane feelings and becomes a source of loyalty. When the people of Europe and America talk about **civilization**, it is based on **patriotism**. Any person who forgets himself, abandons his house, turns his back on his home village and despises his own country is not only ignorant of Confucian principles but has also failed to grasp **Western civilization**.”



# *Bunmei Kaika*

## Civilization and Enlightenment

- Coined by Fukuzawa Yukichi
- Nakatsu samurai
  - *Rangaku* (“Dutch Learning”) in Nagasaki
- Travels to West
  - 1860, 1862
- “Conditions in the West”
  - 1866, 1868, 1870 (3 vols.)
- Creates Keiō University



7KLV IP DJ H LV IQ V&H SXEØF GRP DLO  
6RXUFH : INIP HGID &RP P ROV



7KLV IP DJ H LV IQ V&H SXEØF GRP DLO  
6RXUFH : INIP HGID &RP P ROV



# Enlightenment and Progress (according to Fukuzawa)

Savage

Half-civilized

Enlightened

*Orient?*

*Occident*

Animal  
Nature

The West

Barbarous

Civilized



# *Meirokusha*: The Meiji Six Society

- Created in the sixth year of Emperor Meiji's rule (1873)
- Led by Fukuzawa and leading intellectuals and members of Meiji gov
- Published *Meioku zasshi* (Meiji Six Journal)
- General agreement on civilization
  - Disagreements on the finer points
    - Mori Arinori vs Kato Hiroyuki (1836-1916) on marriage



7KIV IP DJ H LV IQ VWH SXEØF GRP DLO  
6RXUFH : INIP HGID &RP P ROV

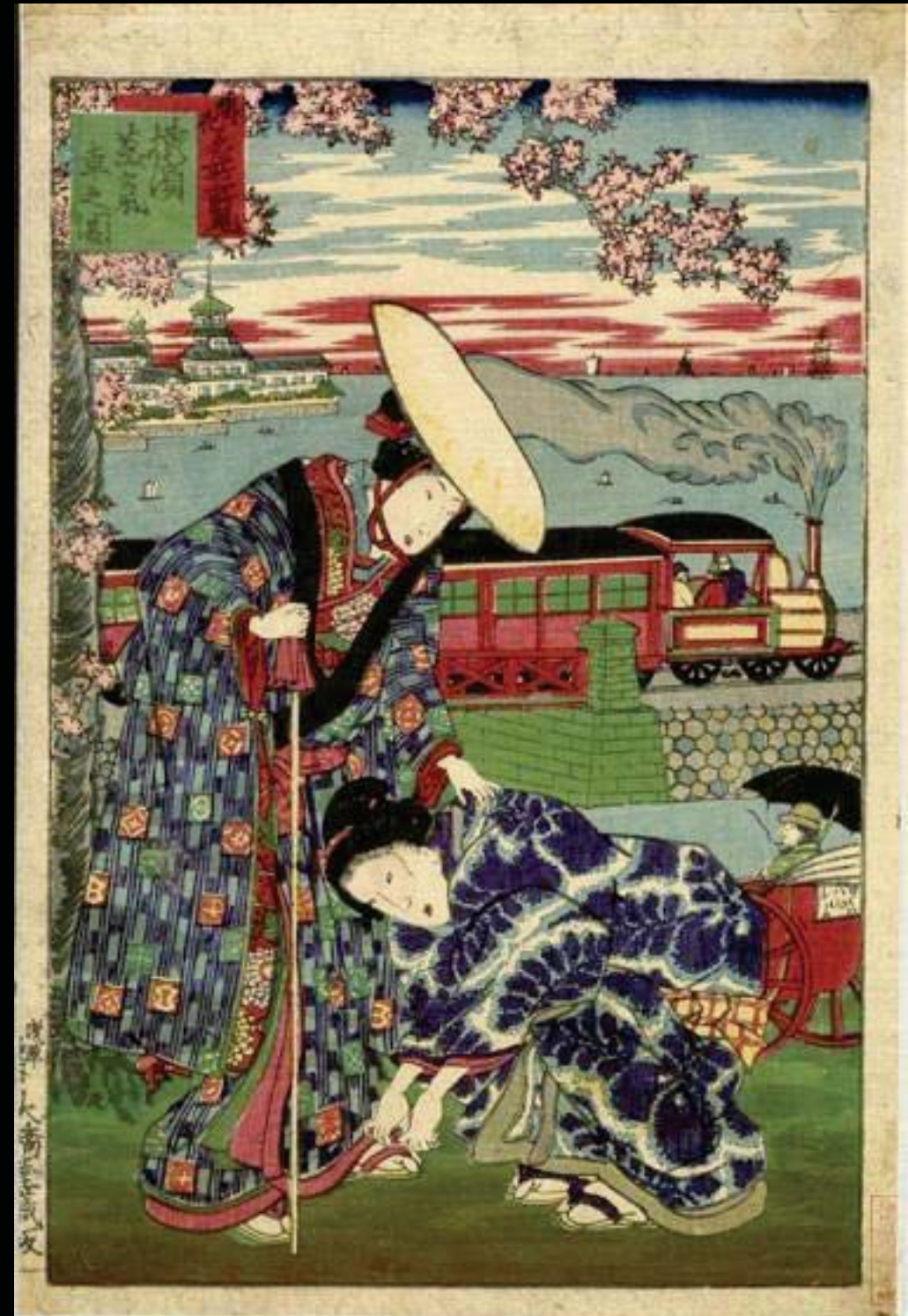


7KIV IP DJ H LV IQ VWH SXEØF GRP DLO  
6RXUFH : INIP HGID &RP P ROV



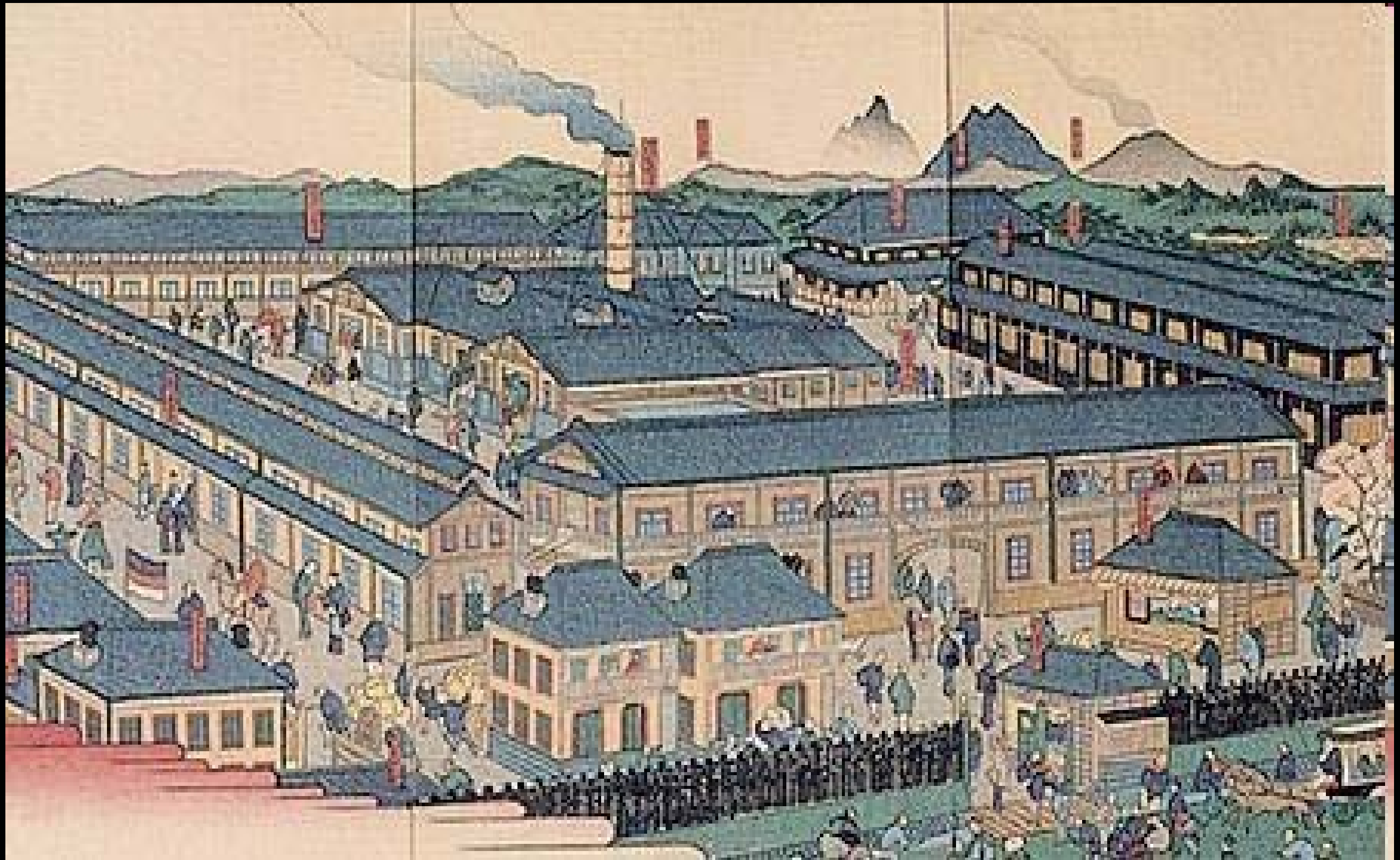
How did Meiji Restoration affect women?

How did women change Meiji Japan?



7KLV IP DJ H LV LQ VKH SXEØF GRP DLQ





7KIV IP DI H IV IO WH SXF Æ GRP DIO

## Tomioka Silk Factory, 1872



# Silk-reeling Slogans

## Government song

Raw silk,

Reel, reel the thread.

Thread is the treasure of the empire!

More than a hundred million yen  
worth of exports,

What can be better than silk thread?

Factory girls,

We are soldiers of peace.

The service of women is a credit

To the empire and to yourselves

## Silk workers' song

How I wish the dormitory would be  
washed away,

The factory burn down,

And the gatekeeper die of cholera,

At six in the morning I wear a devil's  
face,

At six in the evening a smiling face.

I want wings to escape from here,

To fly as far as those distant shores.





Ume Tsuda at Bryn Mawr in 1890

- Bryn Mawr graduate (biology)
- 1901, establish first women's liberal arts college

7KIV IP DJ H LV IQ VWH SXEQF GRP DIO  
6RXUFH : INIP HGLD &RP P ROV

Tsuda Umeko  
1864-1929



# Women as Political activists



7KIV LP DJ H LV LQ WKH SXE OF GRP DLQ

Kishida Toshiko  
1863-1901

- Against the custom of *danson johi*  
("Valuing Men and Denigrating Women")
- Powerful advocate of education

# The Empress' Old Clothes



The Meiji Empress,  
1873

7KLV IP DJ H LV IQ W H SXE OF GRP DLO  
6RXUFH : INIP HGID &RP P ROV



# The Empress' New Clothes

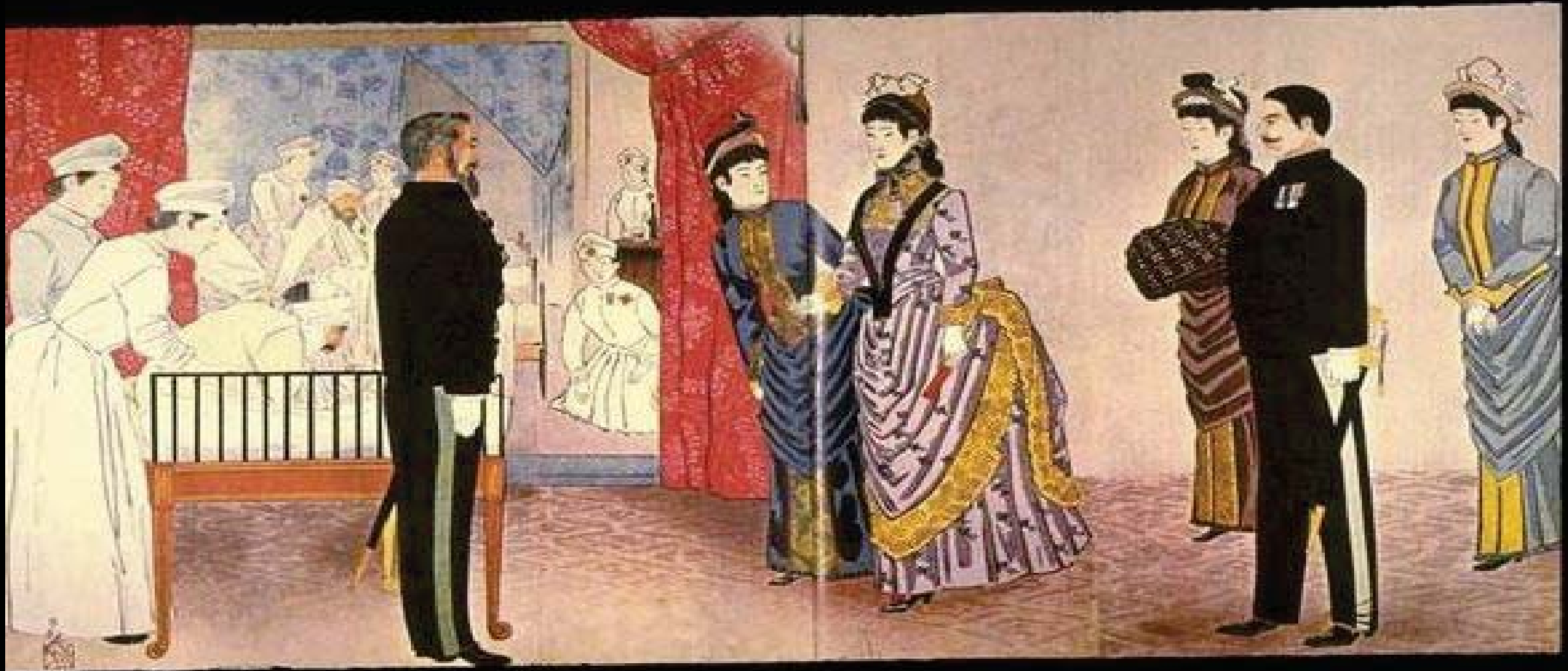


7KLV IP DJ H LV LQ W H SXE ØF GRP DLO  
6RXUFH : **INIP HGID &RP P ROV**



7KLV IP DJ H LV LQ W H SXE ØF GRP DLO  
6RXUFH : **INIP HGID &RP P ROV**

# The Empress' New Role



7KIV IP DJ H LV LO VWH SXEØF GRP DLO



# The Meiji State's Interventions: Promoting Controlled Change

- 1872: compulsory education, including women
- BUT
- 1871: men ordered to cut top-knot and adopt western hairstyles
  - 1872: women banned from having short hair
  - 1873: Tokyo code of misdemeanors prohibits men from dressing as women and women from dressing as men



7KIV IP DJ H LV IQ W H SXEQF GRP DLO

# The Meiji State's Interventions: Promoting Controlled Change

- 1889: The year when men (well, *some* men) formally included in the political process.
- 1889: The year when women (*all* women) were formally disenfranchised from political participation
- 1890: Banning of women from public political activity and association, through Peace Police Law



# The Meiji State's Interventions: Promoting Controlled Change

## **Naturalizing male authority in the family**

- 1898: Meiji Civil Code establishes men as heads of households and placing women at same level as children.
- Code recognizes monogamy as the normative family type, making bigamy a punishable offense.

# Good Wife, Wise Mother

- Two ministries involved in promoting idea: Education and Home Ministries
- Ask women to manage household efficiently and frugally, and to save
- Ask women to take care of the ill, old and young in the service of the nation



# Good Wife, Wise Mother

- The home, now no longer private, but public

*The Meiji Greater Learning for Women*, Education Ministry, 1887: “The home is a public place where *private* feelings should be forgotten.”

- Cult of productivity, cult of domesticity

Work and home never separated in the same way as in other industrializing nations

# Meiji Government: The “Intimate” State

- Unprecedented in its power
- Unprecedented in its intrusiveness in daily lives through the spread of ideas
- Reliance on family and civil society to police its members in matters of normative gender behavior and sexuality.



# *Bunmei Kaika* State Initiatives

- “freedom” of hairstyle (1871)
  - “Yen” born in 1872
- Standardization of currency
  - “Yen” born in 1872
- Gregorian calendar (1873)
  - “Keeping time with the world”
- Institutionalization of leisure time:  
imperial holidays



7KIV IP DJ H IV IQ V&H SXEØF GRP DLO  
6RXUFH : INIP HGID &RP P ROV



7KIV IP DJ H IV IQ V&H SXEØF GRP DLO  
6RXUFH : INIP HGID &RP P ROV

MIT OpenCourseWare  
<https://ocw.mit.edu>

21H.155 Modern Japan: 1868 to Present  
Spring 2017

For information about citing these materials or our Terms of Use, visit: <https://ocw.mit.edu/terms>.