

MIT

Thumbnail History of Boston

Massachusetts Institute of Technology

Urban Transportation Planning

MIT Course 1.252j/11.540j

Fall 2006

Frederick Salvucci, MIT Senior Lecturer

History of Boston Transportation and Analysis of Historical Developments

MIT

Massachusetts Institute of Technology



Image by Alex Maclean. Used with permission. www.landslides.com

Pre 1620

Massachusetts Institute of Technology

- Glaciers
- Rivers
- Codfish

- Charles River
- Mosquitoes
- Drinking Water
- People (Religious Minority)
- The Bible

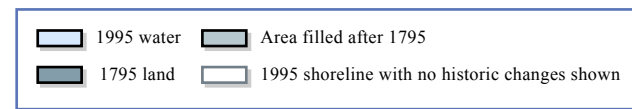
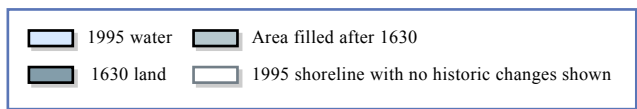
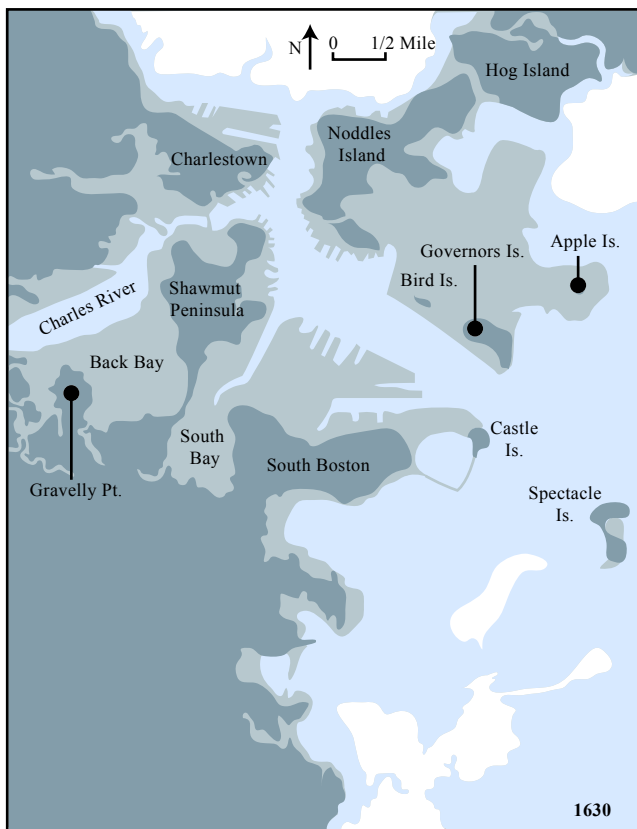
Unusual Commitment to Education

Massachusetts Institute of Technology

- 1635
- Latin School
- 1636
- Harvard
- 1800s
Horace Mann
- 1865
MIT

1635-1776

Massachusetts Institute of Technology

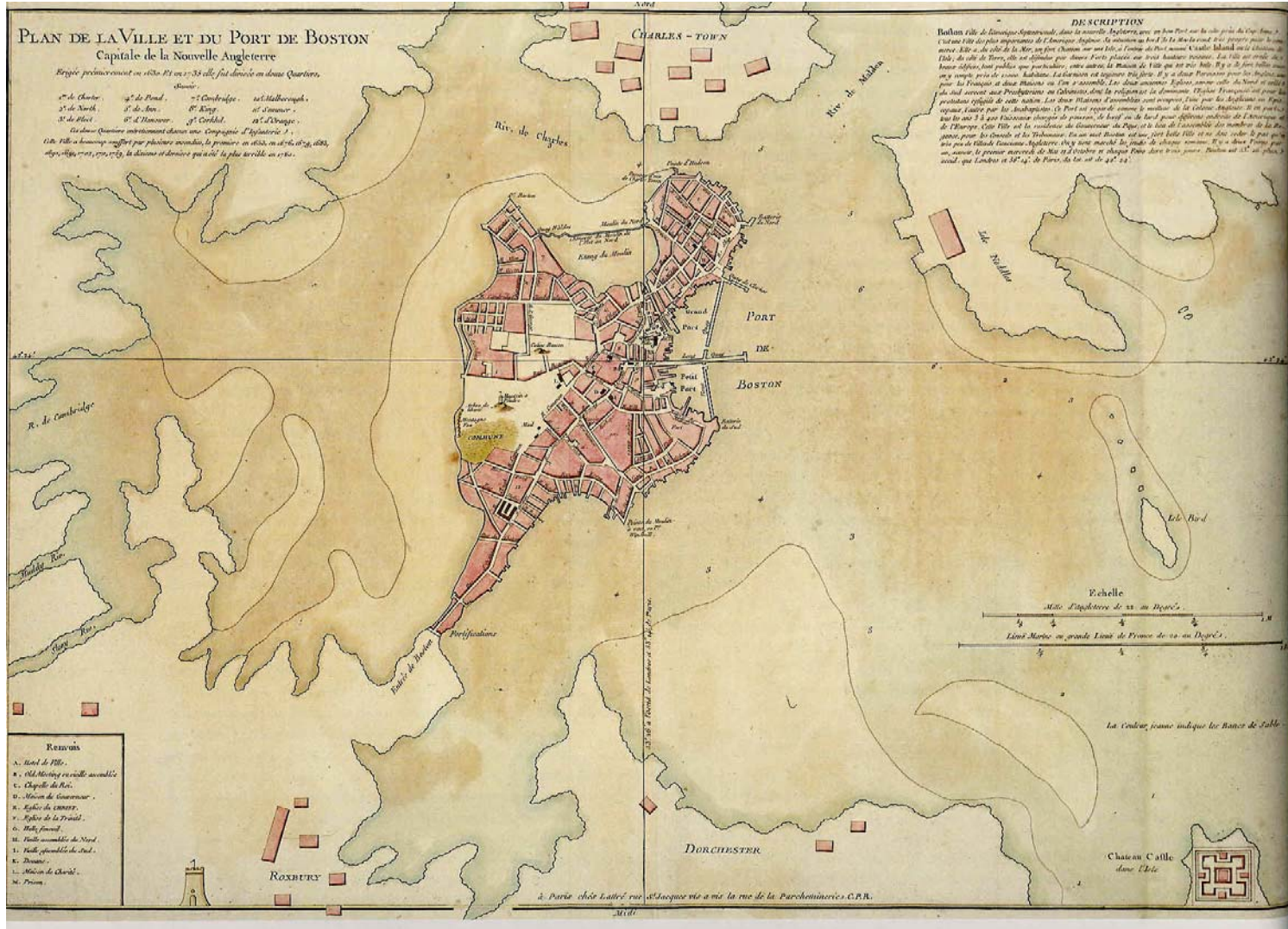


Day 2

Figures by MIT OCW, adapted from Nancy S. Seasholes and Amy Turner, "Diagramming the Growth of Boston", in Mapping Boston.

1635-1776

Massachusetts Institute of Technology



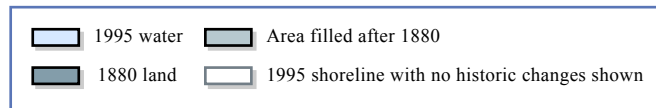
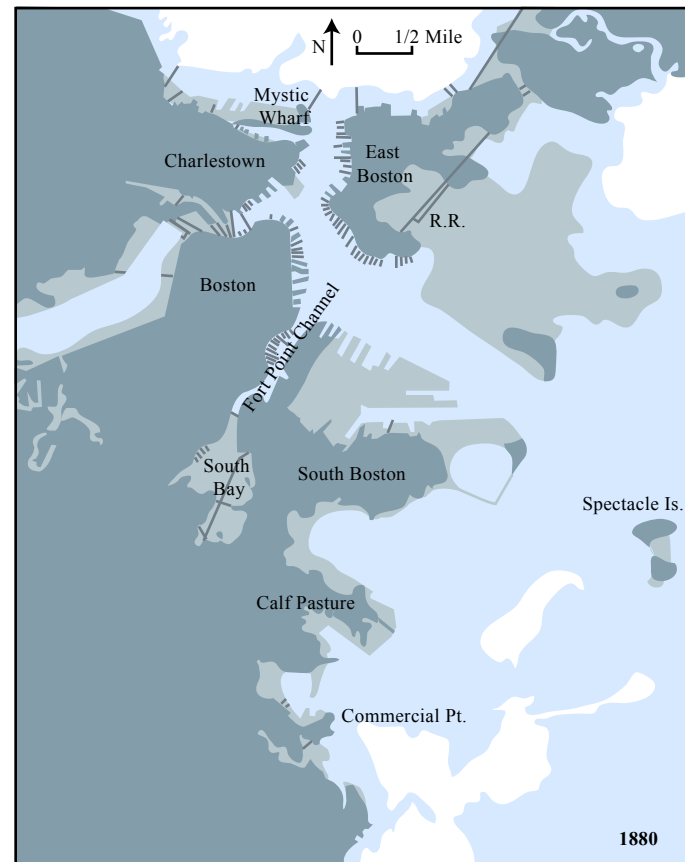
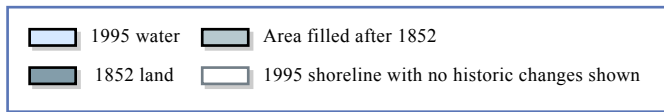
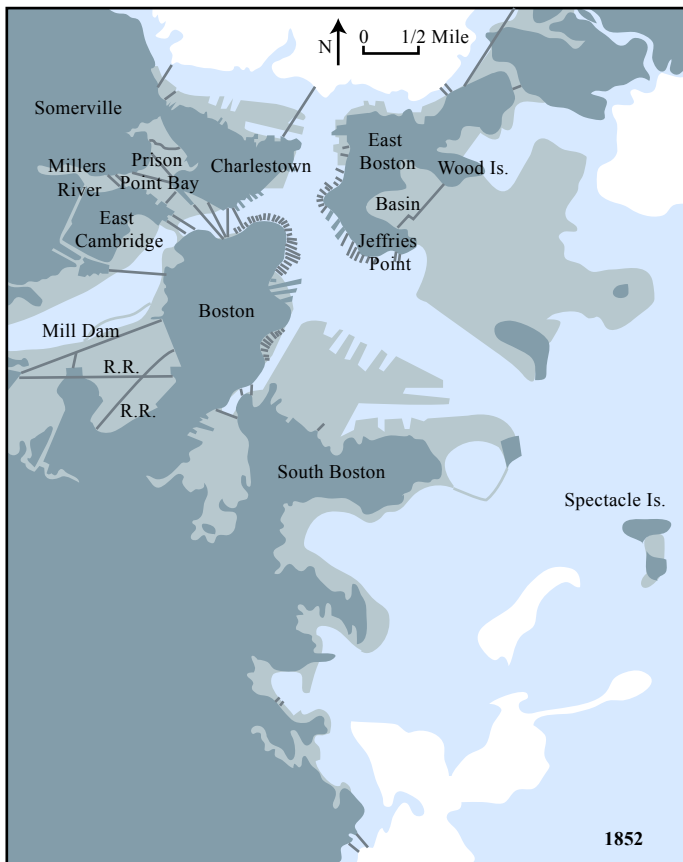
1635-1776

Massachusetts Institute of Technology

- Trade
- Fishing
- Ship Building
- Bad Soil
- Cattle
- Smuggling
- Tax Evasion
- Relations with “Indians”
- Military Relations with England, French, & Indians

1776 --> War of 1812 --> 1830s

Massachusetts Institute of Technology



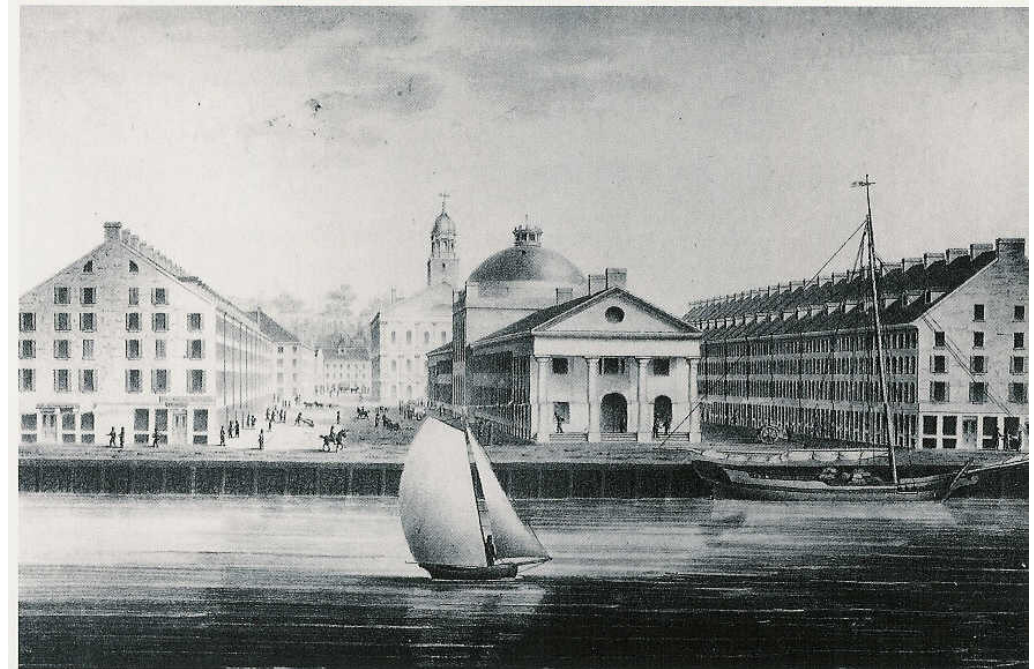
Day 2

Figures by MIT OCW, adapted from Nancy S. Seasholes and Amy Turner, "Diagramming the Growth of Boston", in Mapping Boston.

1776 --> War of 1812 --> 1830s

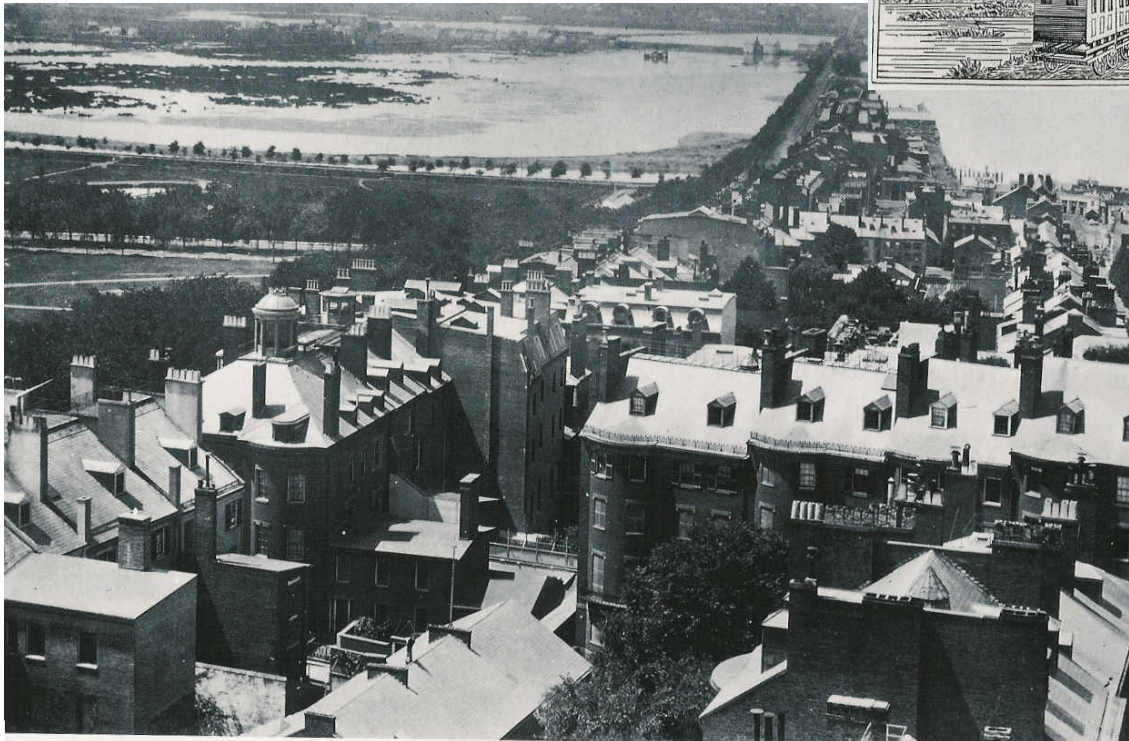
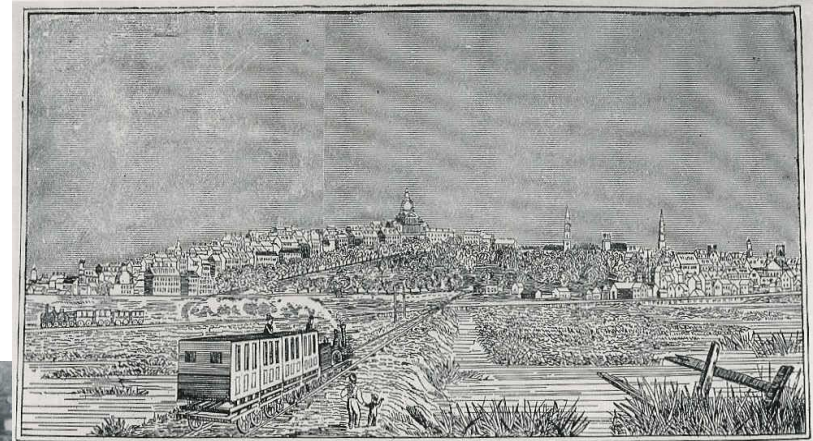
Massachusetts Institute of Technology

- Trade
- Ship Building
- Slave Trade
- Ice
- Clipper Ships
- Filling of Mill Pond
- War with Mexico



1830s - 1870

Massachusetts Institute of Technology



1830s - 1870

Massachusetts Institute of Technology

- Canals
- Rail
- Bicycles
- Mills, Cloth
- Civil War
- Filling South End, Back Bay
- Commuter Rail
- Street Cars
- Immigration (1848 Potato Famine)

1830s - 1870

Massachusetts Institute of Technology



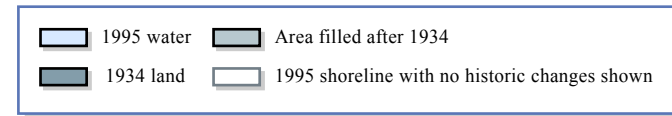
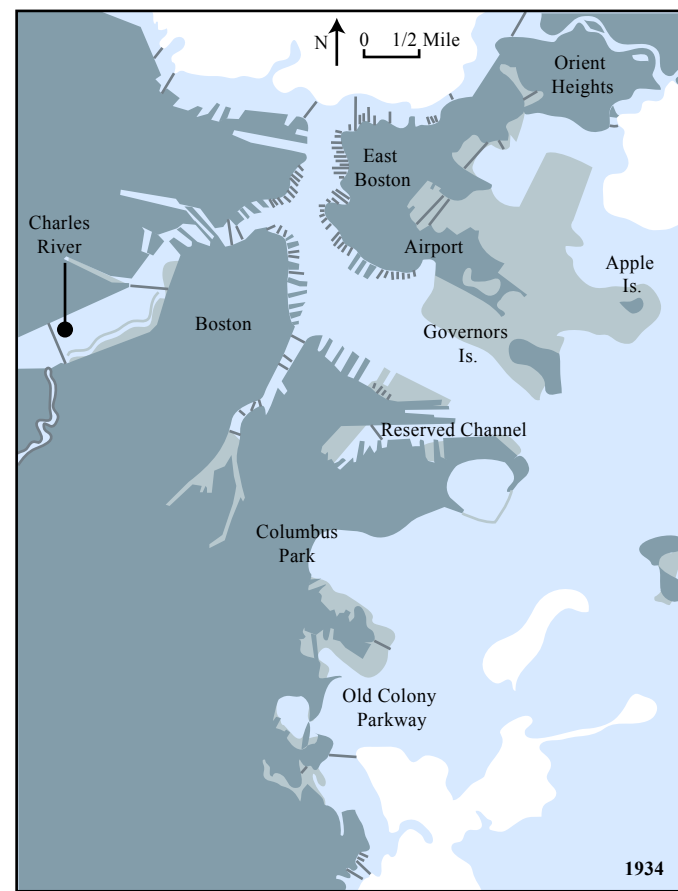
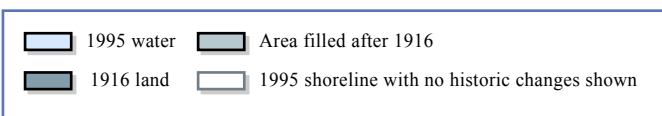
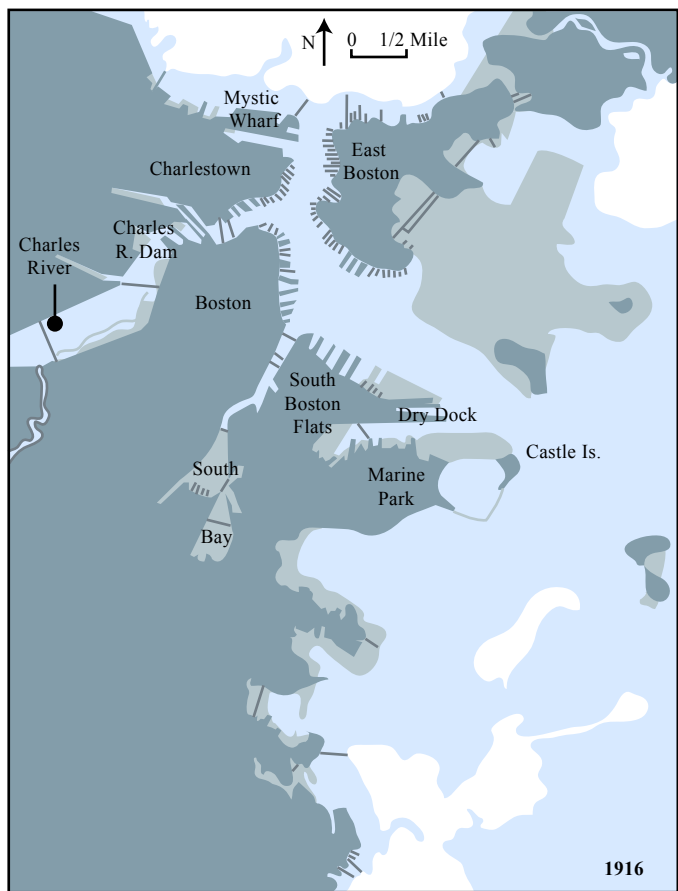
1870 - 1900

Massachusetts Institute of Technology

- Sprague & Siemens
- Streetcar Networking
- Electric Power
- 1894 First Auto in Hemisphere
- 1897 First Subway in Hemisphere
- Streetcar Suburbs & Downtown

1900-1945

Massachusetts Institute of Technology



Day 2

1900-1945

Massachusetts Institute of Technology

- 1914 World War I
- 1920's; Model T, Auto Explosion, Zoning
- 1930's; Depression
- 1940's; World War II
- Subways and the Survival of Rail Transit

1900-1945

Massachusetts Institute of Technology

- 1914 World War I
- 1920's; Model T, Auto Explosion, Zoning
- 1930's; Depression
- 1940's; World War II
- Subways and the Survival of Rail Transit

1945 - 1965 Postwar

Massachusetts Institute of Technology

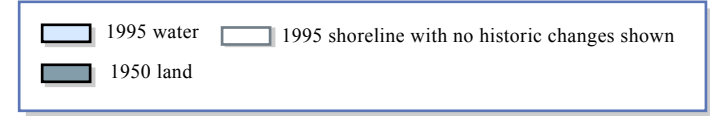
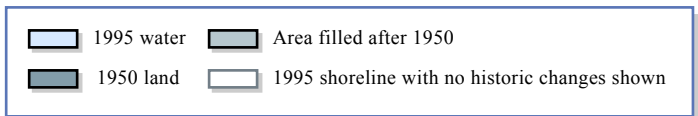
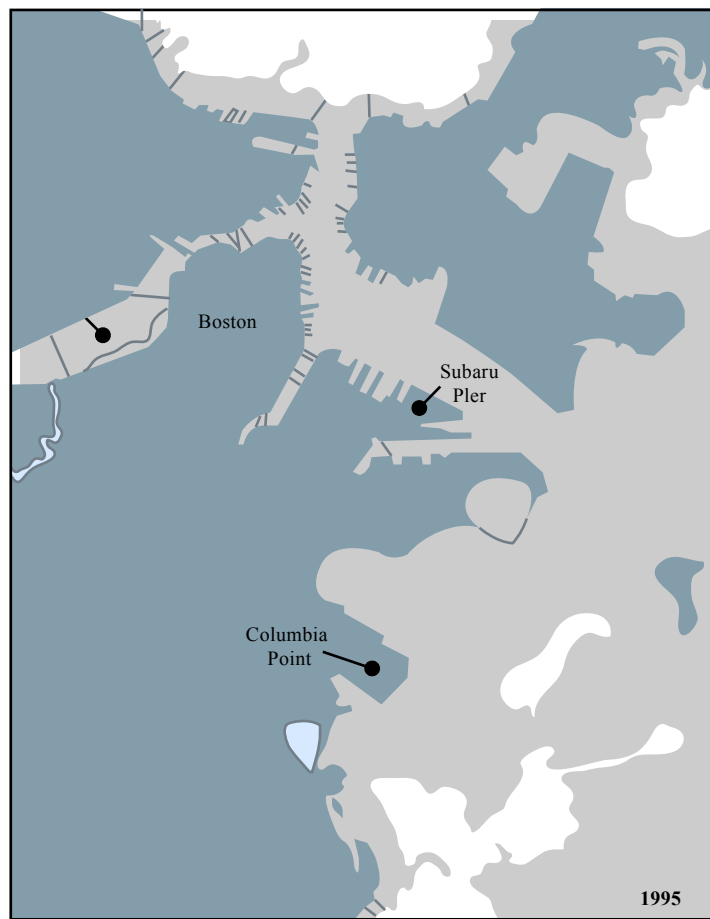
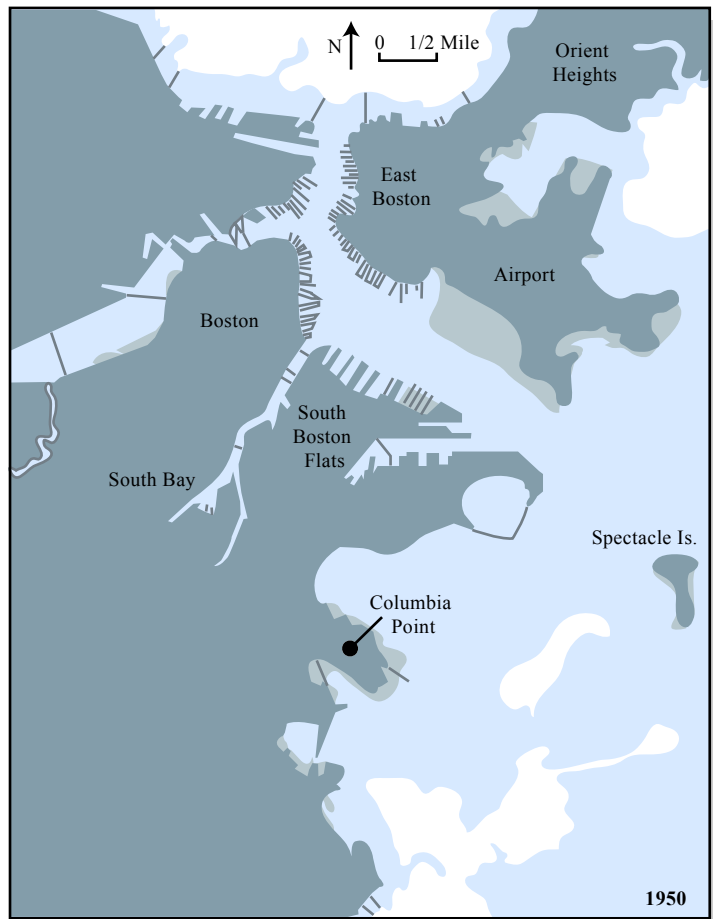
- Oil, Autos, Highways, Suburbs
- 1956 Interstate Highways
- 1959 Southeast Expressway opens; Old Colony Rail closes
- 1964 Expansion of MBTA
 - Riverside Green Line
 - Orange Line tunnel under river
 - Red Line extension to Quincy
- Transit and urban density
- Prudential, British properties, John Hancock
- Back Bay and Downtown

1965-1972

Massachusetts Institute of Technology

- 1960s Reaction to highways
- Boston Transportation Planning Review
- Enhance the City as the Priority
 - Stop Destructive Highways
 - Promote and Improve Transit
 - Control Parking
 - Promote Environmentally Benign Highways:
The Big Dig
- Economy, Equity, Environment

1972 - present



Day 2

1972 - present

Massachusetts Institute of Technology

- Post-Office Square by the Friends of Post Office Square
- Park rededicated in 1997 as the Norman B. Leventhal Park at Post Office Square

1972 - present

Massachusetts Institute of Technology

- 1973 Interstate Transfer
Reorganize MBTA
- 1968-1990 Diversification of highway
construction industry
- 1991-present Big Dig; South Boston Transitway
- Revise Mass Pike, MBTA
- Continued commuter rail expansion

Where Next?

Massachusetts Institute of Technology

- Silver Line
- Blue Line
- North to South Station rail
- Stuart Street
- Urban Ring
- Better bus service, transfers

Where Next?

Massachusetts Institute of Technology

- Red Sox; Medical Complex; South Boston Waterfront District; Cambridge-Somerville
- Suburban sprawl

How to pay for it all?

Massachusetts Institute of Technology

- Federal context
- Local taxes

Summary

Massachusetts Institute of Technology

- Land use
- Accessibility
- Economic Activity
- Equity
- Environment
- Sustainability
- Evaluation of what to do
- Effectiveness
- Financing mechanisms
- Efficiency



Massachusetts Institute of Technology

